

# Palau

(1983- )

A republic comprising about 100 islands and islets at the western end of the Caroline Islands chain in the western Pacific Ocean. These islands were part of the Spanish Caroline Islands until 1899, when they were sold to Germany, which issued stamps for use there. The Caroline Islands were seized by the Japanese during World War I and administered by them under a 1919 mandate of the League of Nations. Invaded and conquered by United States forces in 1944, the islands were made part of the United Nations-mandated U.S. Trust Territory of the Pacific in 1947. Palau became a republic in 1981 and began to issue its own stamps in 1983, although its mail continues to be handled by the U.S. Postal Service.



1983-Palau n° 1  
€ 0,50


SOS-2015-Guyana  
Y&T n°  
First Stamps of UNO States



1978 U.S. Possessions Philatelic Society 1988

Hosting Palau at the Stamp Show






1983-Palau n° 1/2/3/4  
€ 0,50 - 0,50 - 0,50 - 0,50

SOS-1988-Palau  
Y&T n°B4  
Praga '88



Postage Stamps and Philately  
A World of Knowledge and Peace  
Prague, Czechoslovakia  
August 26 - September 4, 1988



1985-Palau n° A10  
€ 1,50

SOS-1997-Palau  
Y&T n°B44  
50° CPS



Beautiful Palau Salutes  
South Pacific Commission 1947-1997

© Palau Postal Service, 1997  
Des: William P. Hignson

1983-Palau n° 16  
€ 1,25

SOS-2020-Sierra Leone  
Y&T n°  
WWF Stamps on Stamps

FAUNA ON  
STAMPS **A-Z**



000879

**PALAU**

170<sup>th</sup> Anniversary of the Penny Black



Penny Black issued 1840

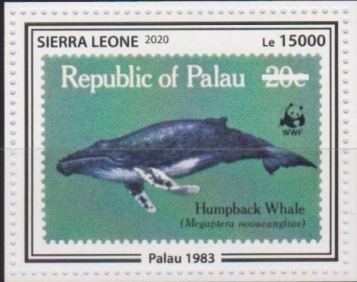
First stamp issued 1983



1983-Palau n° 2  
€ 0,50

SOS-2010-Palau  
Y&T n°B221  
170° Penny Black

1983-Palau SW #20  
€ 1,00  
SOS-2020-Sierra Leone  
SW n°  
Fauna on Stamps



  
**COUNTRIES**  
**P**

**FAUNA ON STAMPS A-Z**